



January 9, 2012

Mr. Jon Barth  
Director of Buildings & Grounds  
East Detroit Public Schools  
11617 10 Mile  
Eastpointe, Michigan 48021

RE: Completion Report  
AHERA 6-Month Periodic Surveillances

Dear Mr. Barth,

*arch environmental group* has completed the AHERA Six Month Periodic Surveillance activities for East Detroit Public Schools, including all educational and auxiliary buildings. All activities were conducted in accordance with 40 CFR 763.92(b) "Periodic Surveillances". A copy of the surveillance report for each respective building will be placed in that building's AHERA Management Plan(s) during the next scheduled AHERA activities, in approximately six (6) months. The accredited inspector who conducted these activities identified the items included in the attached tables which *arch environmental group* recommends be addressed (i.e. repaired, removed). Photographs of new damaged materials identified during the current AHERA Six Month Periodic Surveillance are also attached to this report.

*arch environmental group* looks forward to working with you in the future and helping you to address any concerns regarding environmental health and safety. If you have any questions regarding our findings, or if I can be of further assistance please feel free to contact me at (248) 426-0165.

Sincerely,

**healthAIR**  
A Division of *arch environmental group*

A handwritten signature in black ink, appearing to read 'Sheri Carriere', written over a white background.

Sheri Carriere  
Consultant

Attach: Listing of Identified Damaged ACM  
Photographs of New Identified Damaged ACM

## AHERA Six Month Periodic Surveillance Listings of Damaged Asbestos-Containing Materials

### Bellview Elementary School

Location	Material(s)	Recommended Action	Round Added
Room 9 <i>(photo # 9)</i>	9"x9" Floor Tile	Remove/Repair damaged tiles along walls	DEC. 2012
Room 10 <i>(photo # 9)</i>	9"x9" Floor Tile	Remove/Repair damaged tiles along walls	DEC. 2012
Custodial Office <i>(photo #10&amp;11)</i>	9"x9" Floor Tile	Remove/Repair damaged tiles	DEC. 2012
Room A-2 <i>(photo # 12)</i>	Pipe Insulation	Repair small holes/exposed material	DEC. 2012
Room B-3 Pipe Chase <i>(photo # 13)</i>	Pipe Insulation	Repair one exposed elbow	DEC. 2012

### Crescentwood Elementary School

Location	Material(s)	Recommended Action	Round Added
Room 8- S/E corner at heat unit <i>(photo # 1)</i>	Straight Pipe Insulation	Repair loose wrap	DEC. 2012
Room 20- S/W corner at heat unit <i>(photo # 2)</i>	Straight Pipe Insulation	Repair loose wrap	DEC. 2012
Kindergarten 1- above Bathroom door & Bathrooms <i>(photo # 3&amp;4)</i>	Straight Pipe Insulation	Repair damaged/exposed material	DEC. 2012
Kindergarten 2- Bathrooms <i>(photo #5&amp;6)</i>	Straight Pipe Insulation	Repair/Remove damaged material	DEC. 2012
Hallways & Classrooms above LICT <i>(photo # 7)</i>	Trowelled On Ceiling Material	Repair exposed material from ceiling grid hangers	DEC. 2012

### East Detroit High School

Location	Material(s)	Recommended Action	Round Added
Throughout <i>(photo # 14&amp; 15)</i>	9"x9" Floor Tile	Remove/Repair	DEC. 2012
Gym Storage <i>(photo # 16&amp;17)</i>	Pipe Insulation	Repair exposed/hanging material	DEC. 2012
Tunnel (access in stairwell b/w Assistant Princ. Office & Men's Faculty Bathroom) <i>(photo # 18)</i>	Pipe Insulation	Remove loose/cut pipe & debris	DEC. 2012

### Forest Park Elementary School

Location	Material(s)	Recommended Action	Round Added
Main Entrance <i>(photo # 19-22)</i>	9"x9" Floor Tile	Remove/Repair damaged tiles	DEC. 2012
Room 4 Bathroom <i>(photo # 23)</i>	Smooth Plaster Ceiling Material	Remove/Repair	DEC. 2012
Room 10 <i>(photo # 19-22)</i>	9"x9" Floor Tile	Repair whole missing tiles	DEC. 2012
Room 15 <i>(photo # 19-22)</i>	9"x9" Floor Tile	Remove damaged tiles along walls	DEC. 2012
Room 17 <i>(photo # 19-22)</i>	9"x9" Floor Tile	Repair whole missing tiles	DEC. 2012
Room 21 <i>(photo # 19-22)</i>	9"x9" Floor Tile	Remove damaged tiles	DEC. 2012
Room 23 <i>(photo # 19-22)</i>	9"x9" Floor Tile	Remove damaged tiles	DEC. 2012
Room 24 <i>(photo # 19-22)</i>	9"x9" Floor Tile	Repair damage/exposed material	DEC. 2012
Receiving Room <i>(photo # 24)</i>	Pipe Insulation	Repair damage/exposed material	DEC. 2012
Hallways & Classrooms above LICT <i>(photo # 25)</i>	Trowelled On Ceiling Material	Repair exposed material around ceiling grid hangers	DEC. 2012

## AHERA Six Month Periodic Surveillance Listings of Damaged Asbestos-Containing Materials

### Kellwood Center

Location	Material(s)	Recommended Action	Round Added
Hallways & Classrooms above LICT (photo #46 & 47 )	Trowelled On Ceiling Material	Repair exposed material around electrical systems and ceiling grid hangers	DEC. 2012
Art Room 101 Storage (photo # 48 )	Straight Pipe Insulation	Repair exposed ends	DEC. 2012
Custodial Closet next to Room 101 (photo # 49)	Straight Pipe Insulation	Repair one exposed end	DEC. 2012

### Kelly Middle School

Location	Material(s)	Recommended Action	Round Added
Hallway outside of Room 115 (photo # 33)	9"x9" Floor Tile	Repair	DEC. 2012
Room 114 Science Lab (photo # 32)	9"x9" Floor Tile	Repair	DEC. 2012
Receiving Room at Exit Door (photo # 34)	9"x9" Floor Tile	Remove damaged tiles	DEC. 2012
Stage (photo # 27)	9"x9" Floor Tile	Remove damaged tiles	DEC. 2012
Cafeteria at Stage & Exit (photo # 26)	9"x9" Floor Tile	Remove whole loose tiles	DEC. 2012
North Hall near Serving & Boys Locker Room (photo # 35)	Pipe Insulation	Repair one damaged elbow	DEC. 2012
Hall outside of Room 211 (photo # 28)	9"x9" Floor Tile	Remove damaged floor tile	DEC. 2012
Hallway outside of Room 210/211 (photo # 36)	Roof Drain Insulation	Remove/Repair damaged material & debris	DEC. 2012
Room 214 (photo # 31)	9"x9" Floor Tile	Remove damaged floor tile	DEC. 2012
Room 200D next to Staff Lounge (photo # 29)	9"x9" Floor Tile	Remove damaged tile	DEC. 2012
Hall outside of Room 205 (photo # 30)	9"x9" Floor Tile	Remove damaged tile	DEC. 2012

### Pleasantview Elementary School

Location	Material(s)	Recommended Action	Round Added
Main Hall Boys & Girls Bathrooms (photos #37&38)	Pipe Insulation	Repair exposed ends	DEC. 2012
Room 12 (photo # 41-45)	9"x9" Floor Tile Mastic	Repair whole missing tiles	DEC. 2012
Room 25 (photo # 41-45) (photo # 38)	9"x9" Floor Tile & Mastic	Remove/Repair damaged tiles & exposed mastic	DEC. 2012
Rooms 26 (photo # 41-45) (photo # 40)	Pipe Insulation	Repair exposed ends	DEC. 2012
Room 32 (photo # 41-45)	9"x9" Floor Tile & Mastic	Remove/Repair damaged tiles & exposed mastic	DEC. 2012
Room 35 (photo # 41-45)	9"x9" Floor Tile & Mastic	Remove/Repair damaged tiles & exposed mastic	DEC. 2012

Name of Building: Bellview Elementary School

Date: 12/21/2012

PICTURES OF DAMAGED ASBESTOS-CONTAINING MATERIALS



#9



#10



#11

Name of Building: Bellview Elementary School

Date: 12/21/2012

*PICTURES OF DAMAGED ASBESTOS-CONTAINING MATERIALS*



#12



#13

Name of Building: Crescentwood Elementary School

Date: 12/19/2012

**PICTURES OF DAMAGED ASBESTOS-CONTAINING MATERIALS**



#1



#2



#3

Name of Building: Crescentwood Elementary School  
Date: 12/19/2012

*PICTURES OF DAMAGED ASBESTOS-CONTAINING MATERIALS*



#4



#5



#6



#7

Name of Building: East Detroit High School  
Date: 12/21/2012

*PICTURES OF DAMAGED ASBESTOS-CONTAINING MATERIALS*



#14



#15



Name of Building: East Detroit High School

Date: 12/21/2012

**PICTURES OF DAMAGED ASBESTOS-CONTAINING MATERIALS**



#16



#17



#18

Name of Building: Forest Park Elementary School  
Date: 12/21/2012

*PICTURES OF DAMAGED ASBESTOS-CONTAINING MATERIALS*



#19



#20



#21



#22

Name of Building: Forest Park Elementary School  
Date: 12/21/12

**PICTURES OF DAMAGED ASBESTOS-CONTAINING MATERIALS**



#23



#24



#25

Name of Building: Kelly Middle School  
Date: 12/21/2012

*PICTURES OF DAMAGED ASBESTOS-CONTAINING MATERIALS*



#26



#27



#28



#29



#30



#31

Name of Building: Kelly Middle School  
Date: 12/21/2012

*PICTURES OF DAMAGED ASBESTOS-CONTAINING MATERIALS*



#32



#33



#34



#35



#36

Name of Building: Kellwood Center  
Date: 1/8/2012

**PICTURES OF DAMAGED ASBESTOS-CONTAINING MATERIALS**



#46



#47



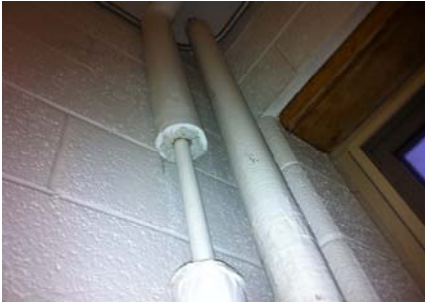
#48



#49

Name of Building: Pleasantview Elementary School  
Date: 12/21/2012

PICTURES OF DAMAGED ASBESTOS-CONTAINING MATERIALS



#37



#38



#39



#40



#41



#42

Name of Building: Pleasantview Elementary School  
Date: 12/21/2012

**PICTURES OF DAMAGED ASBESTOS-CONTAINING MATERIALS**



#43



#44



#45